

Virtus in medium est History and Planning towards an urban-rural future



Rui del Pino Fernandes

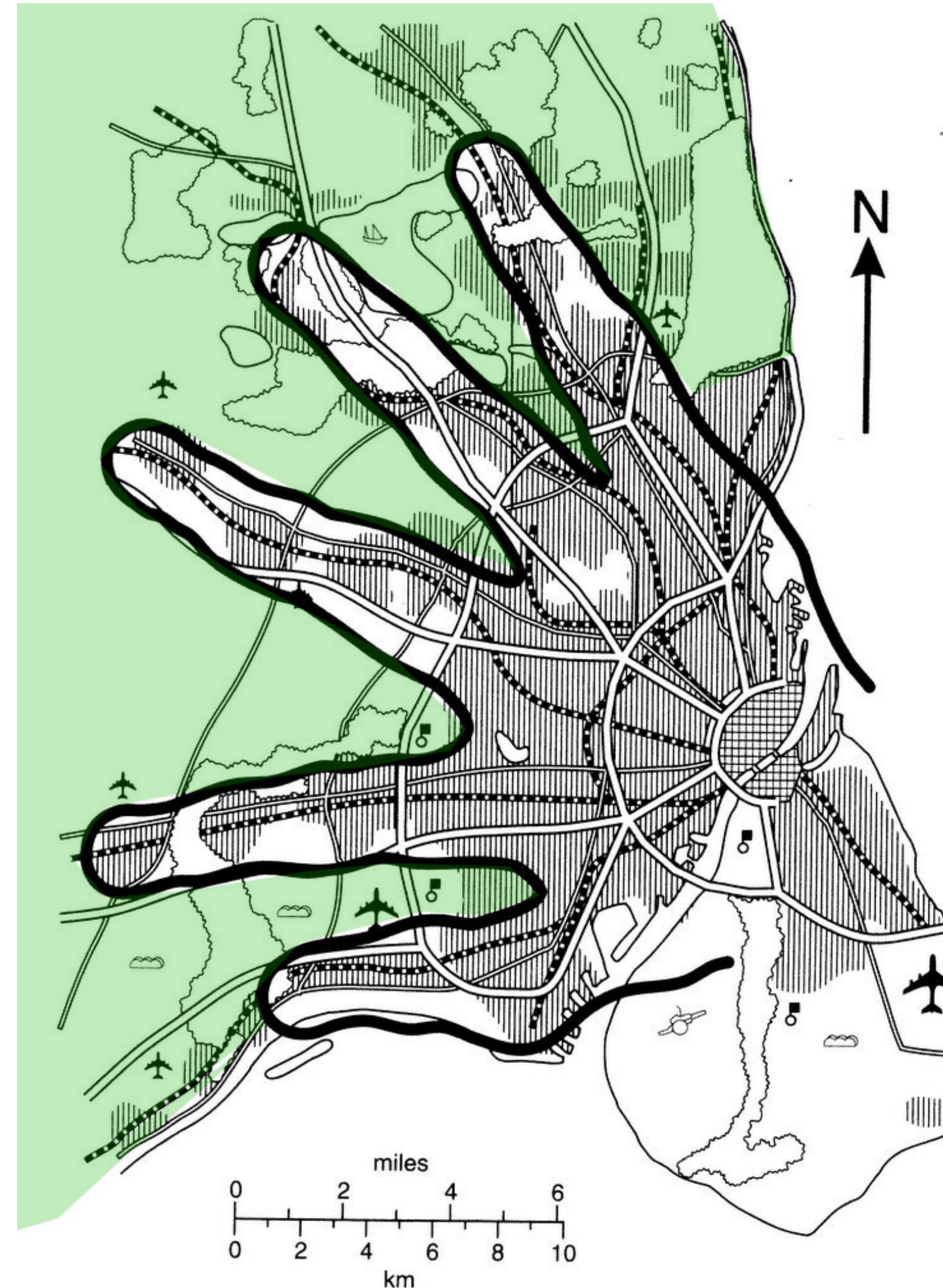
ruidelpino@live.com.pt

Supervisor(s): Teresa Marat-Mendes¹

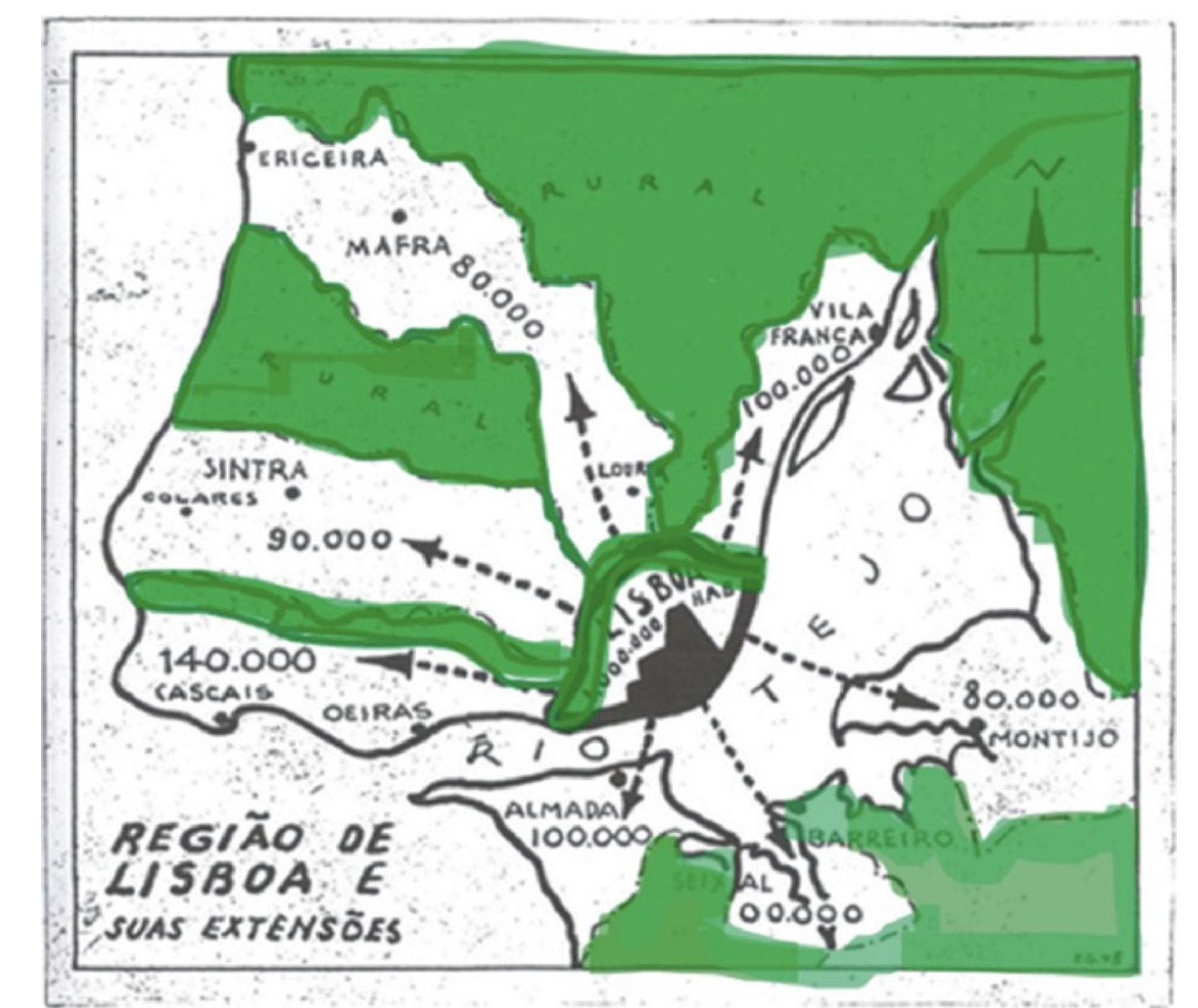
¹. DINÂMIA'CET-Iscte

MIT Portugal 2023 Annual Conference

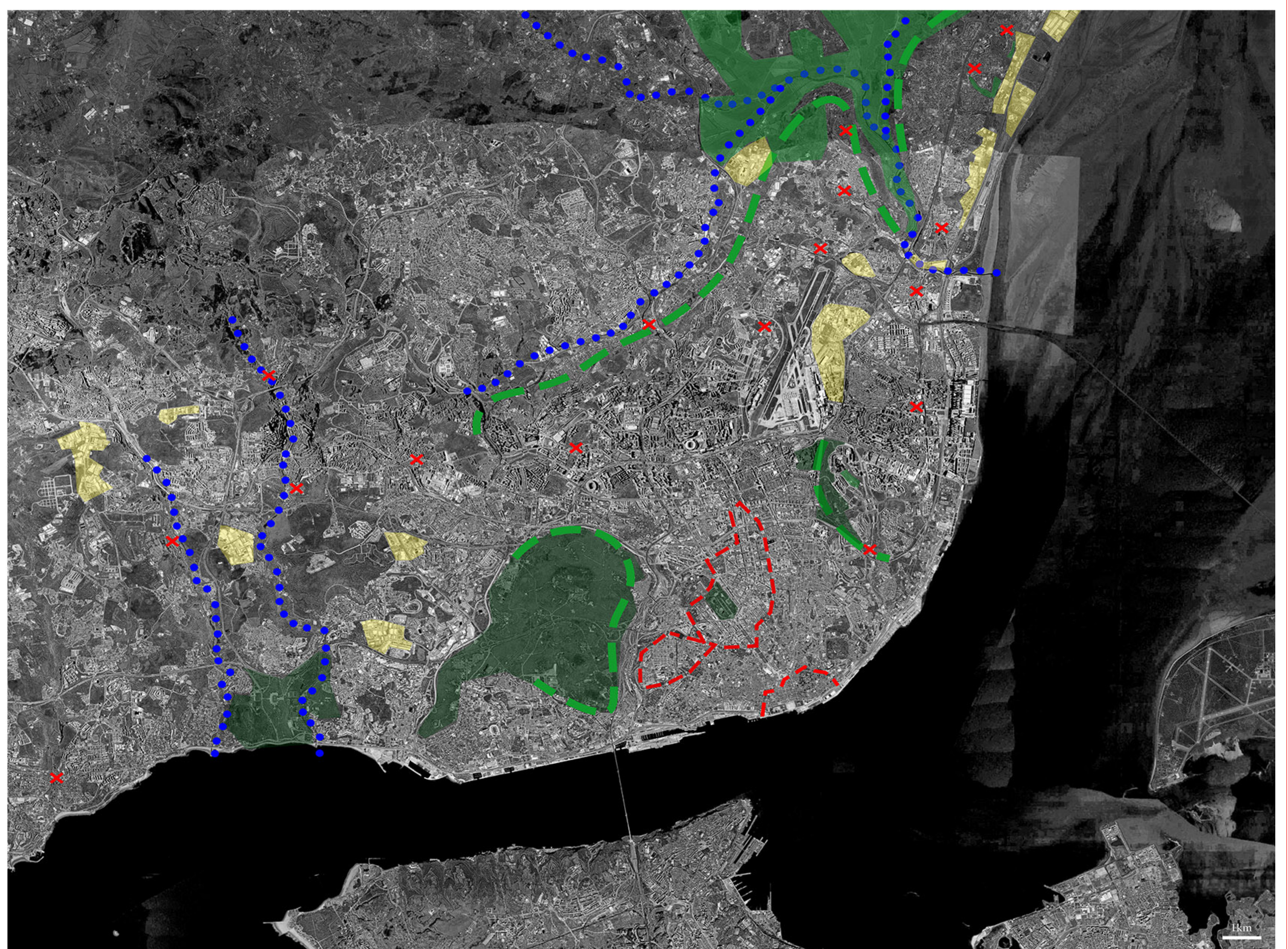
It is urgent to create **new urban realities** to face **climate change**, and to that end the path leads us to explore different scales of green spaces for recreation, production and environmental protection, to enhance the city-region scale and to create synergies between rural and urban environments. Considering these ambitions and concerns, how can we create the *habitat* for the 21st century, seeking a **sustainable relationship** between the **city** and **nature** on a territorial scale? We intend to resort to the concept of *garden-city* as an example of **sustainable habitat**. Conceiving the garden-city from the point of view of landscaping means placing the organization of the territory as an essential part of the design of the *habitat* and, at the same time, rethinking Man's relationship with it. This implies bridging the gap between territorial planning for new realities and new forms of human aggregation, on the one hand, and the multifunctional **landscape as a whole**. Understanding how built forms, including green spaces, empty spaces, blue and green structure dialogue with each other and establish themselves in the territory, we seek to contribute to creating the tools for a sustainable habitat.



Fingerplanen (Finger Plan) Copenhagen – 1947, *the city and nature intertwined*



Lisbon region and its extensions (1948), Étienne de Gröer (1882-1974), *the green fingers of Lisbon...*



- x rural cluster incorporated into the urban space
- Water structure
- Topographic accidents
- Historic center and planned extension
- protective green structure
- agricultural zone
- industrial zone

Getting to know the territory,
the retroactive garden-city

Funded by:



under the Doctoral Grant MPP2030-FCT fellowship Sustainable Cities